



FY26-27 Budget Hearing

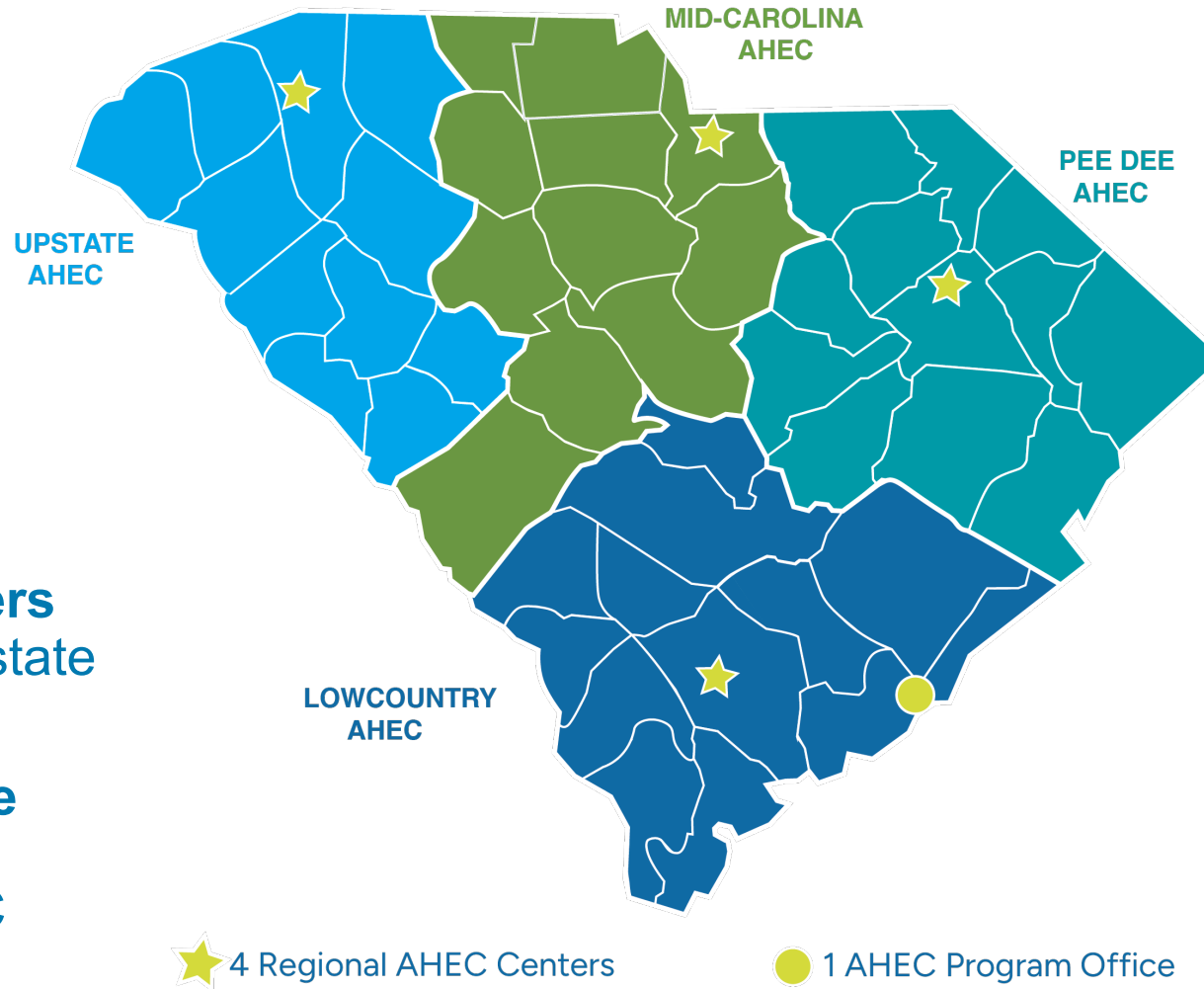
Area Health Education Consortium | H530 | January 20, 2026

Agency Attendees

Ann Lefebvre, DSW, CPHQ
Executive Director

Ali McMenamin, MA
Director of Communications

South Carolina AHEC System



4 regional centers
serve the entire state

1 program office
administratively
housed at MUSC

SC AHEC System At-A-Glance

Region Size: **11 or 12 counties**

Total Staff: **72**

Regional Staff: **46**

PO Staff (state FTEs): **27**

Program Areas: **6**

13,706

Individuals served in FY25

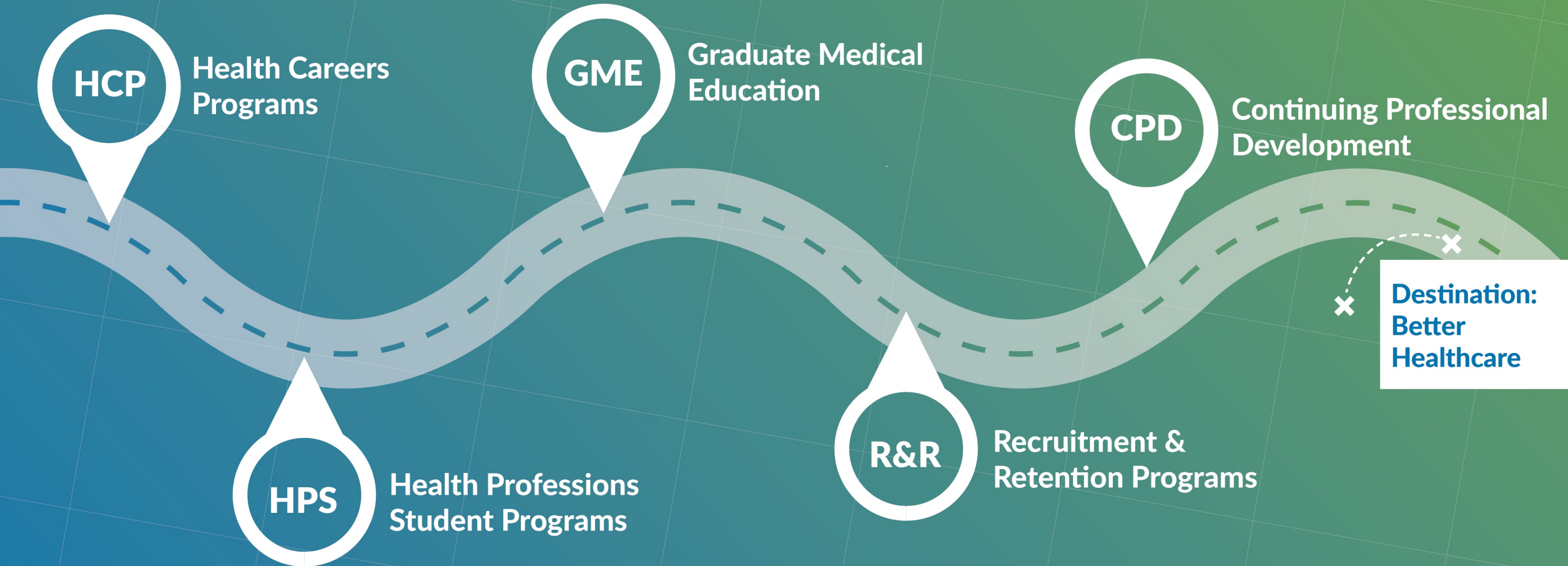
291,835

Total contact hours of
programming in FY25

Supporting the Pathway to a Strong Health Workforce



South Carolina
Office for Healthcare
Workforce



Budget Request Summary

South Carolina AHEC is requesting level funding for FY27.

South Carolina AHEC has no:

- Recurring requests
- Non-recurring requests
- Capital requests
- Proviso requests

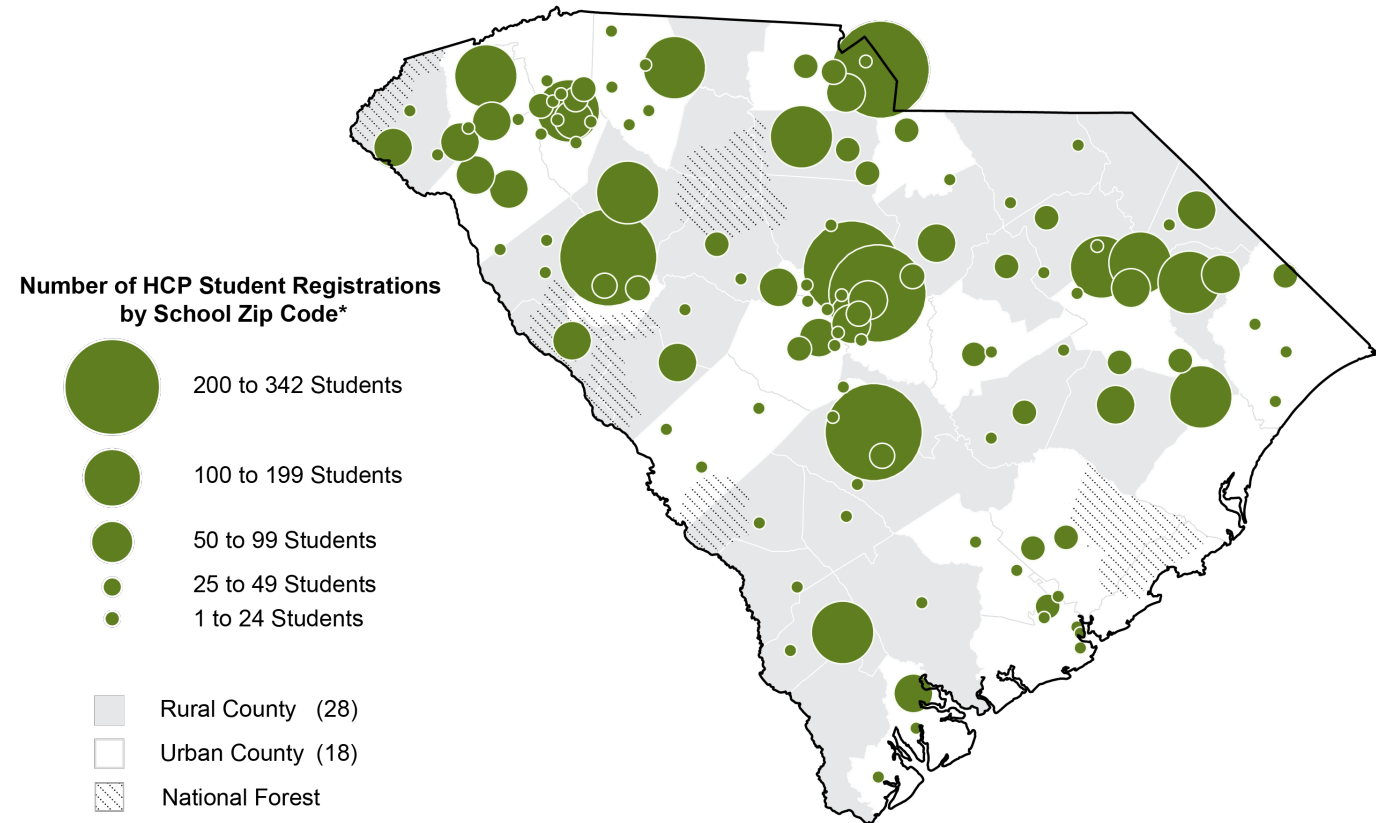
Update: FY26 Recurring Budget Increase

- \$875,000 to support increased alignment of healthcare workforce development
- Included 2 new state FTEs and funding to hire 8 new staff across the 4 regional AHEC centers
 - Hiring in progress
- Collaborating with partners to plan for alignment:
 - CCWD subcommittees
 - Department of Education
 - SCHA and other workforce partners

Health Careers Program

- **1,243** high school and college students participated in AHEC programming
- **11,802** total contact hours of programming delivered to students
- **39%** of participants were from rural areas
- **678** students participating in hands-on experiences

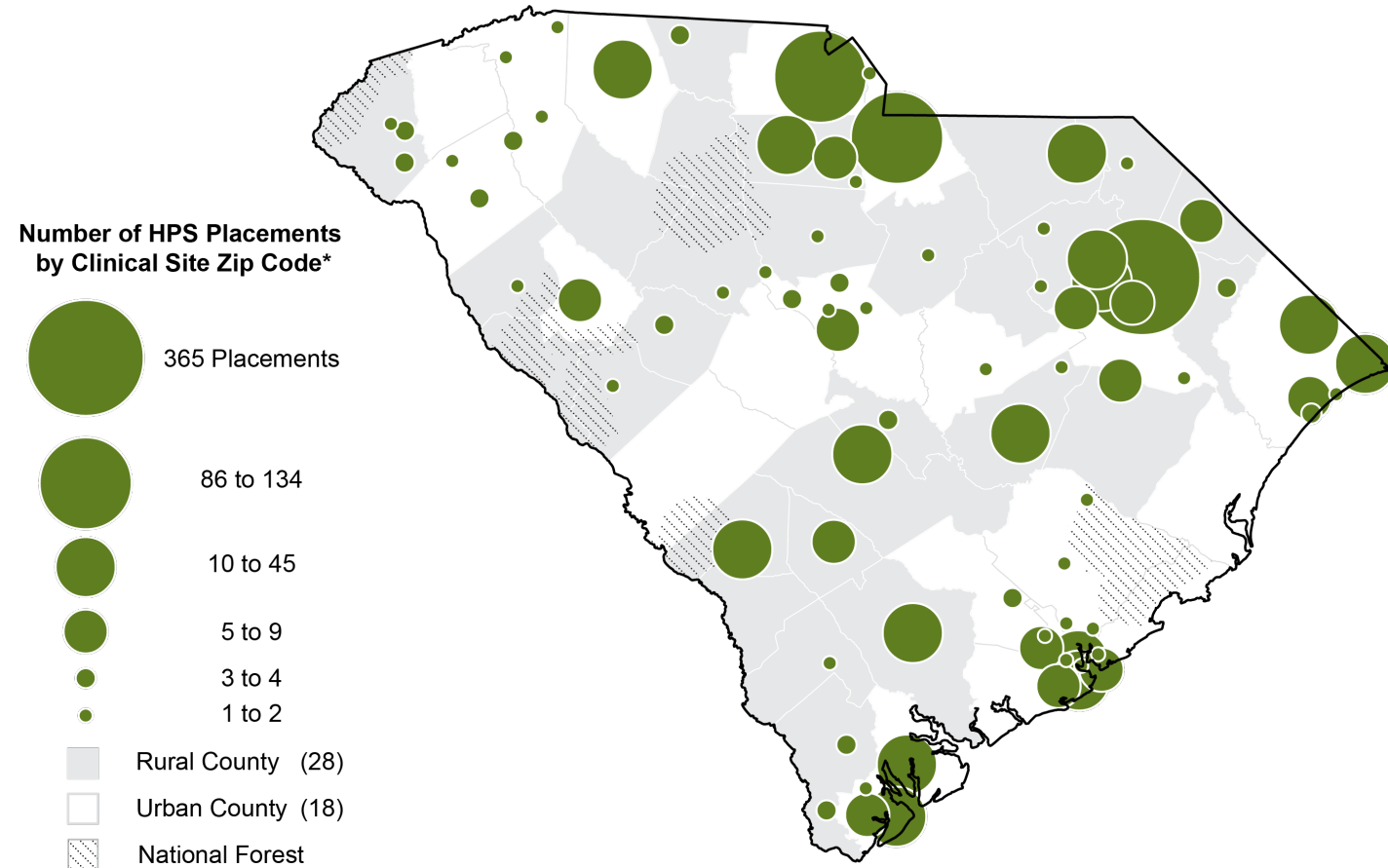
SC AHEC Health Careers Students Served Across the State (by High School ZIP Code)



Health Professions Student Program

- **1,134** training site placements
- **355** preceptors at **179** community-based training sites
- **32%** of placements in a rural setting
- **43%** of placements in a primary care setting

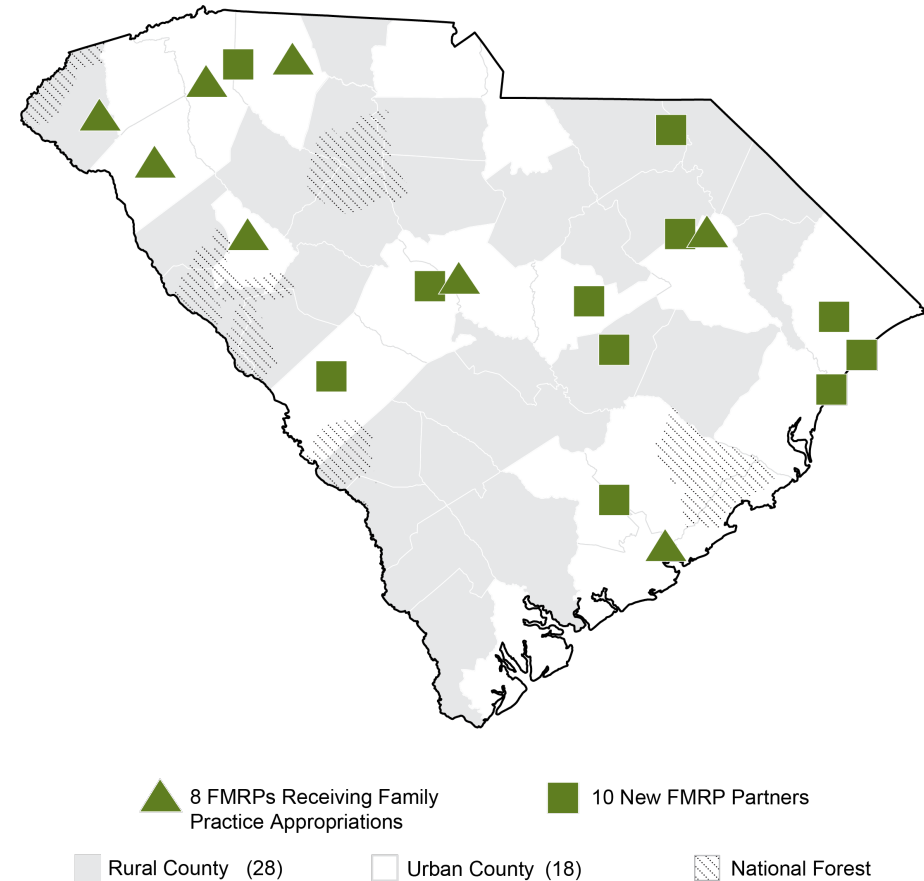
SC AHEC Health Professions Student (HPS) Training Assignments Placed Students in Communities across SC



Graduate Medical Education

- **2,236** contact hours of training accrued by residents in the AHEC Learning Portal
- **54** residents participating in training via the AHEC Learning Portal
- **52** students representing **17** medical schools attended SC Family Medicine Interest Day

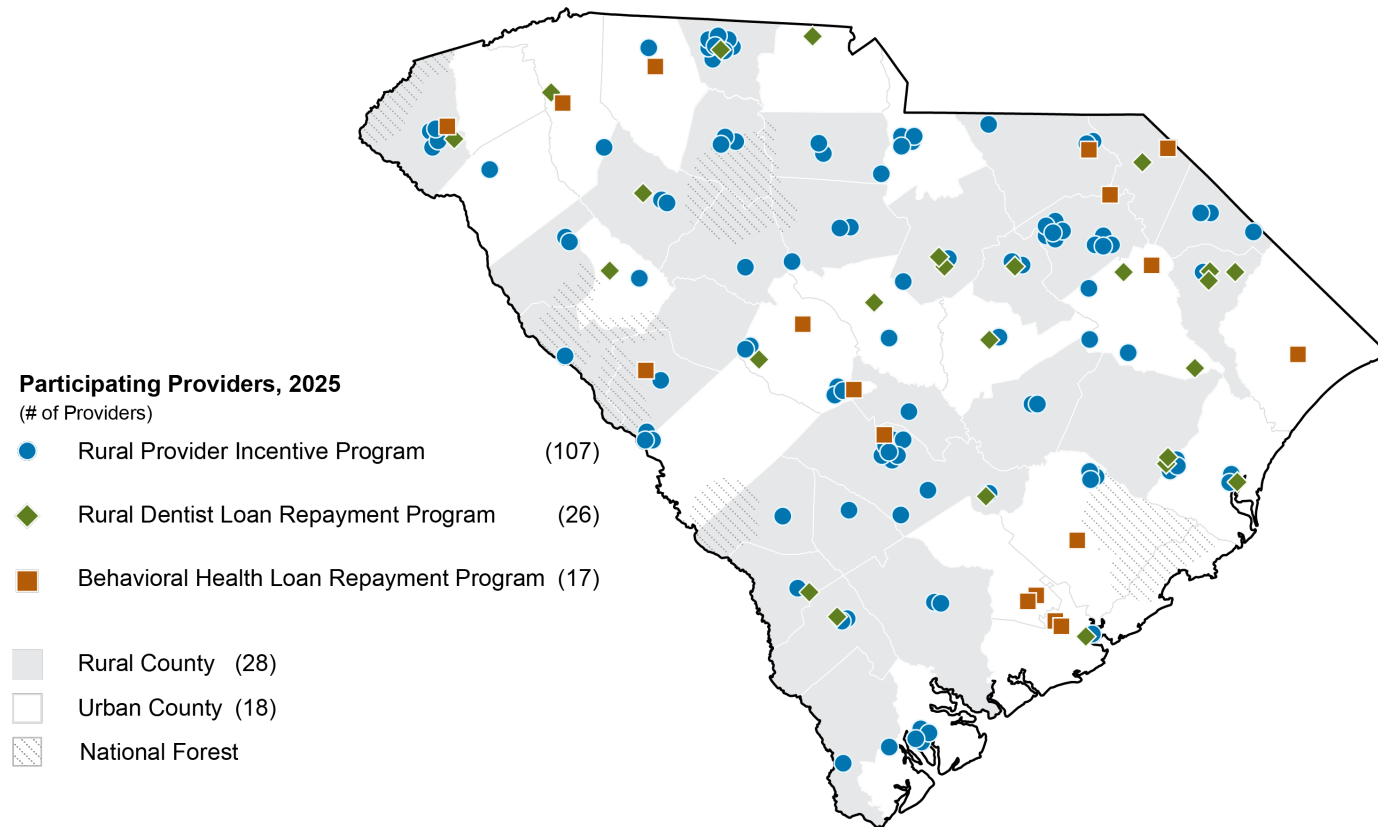
Family Medicine Residency Programs in South Carolina



Recruitment & Retention Programs

- **107** physicians and advanced practice providers active in Rural Provider Incentive Program
- **26** dentists active in the Rural Dentist Loan Repayment Program
- **197** applicants to Rural Behavioral Health Professional Incentive Program established via proviso for FY25

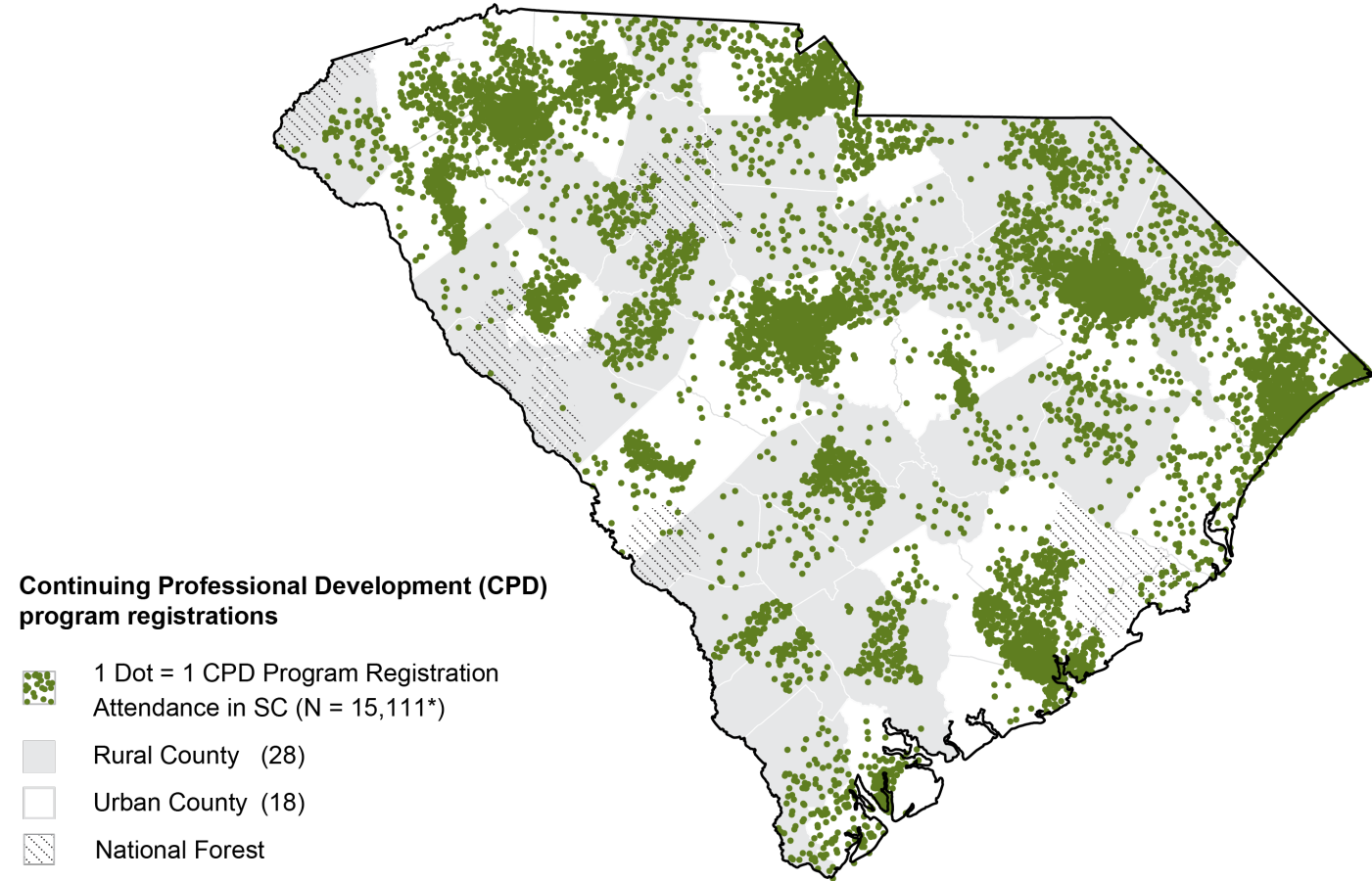
South Carolina Recruitment & Retention Program Participants, FY25

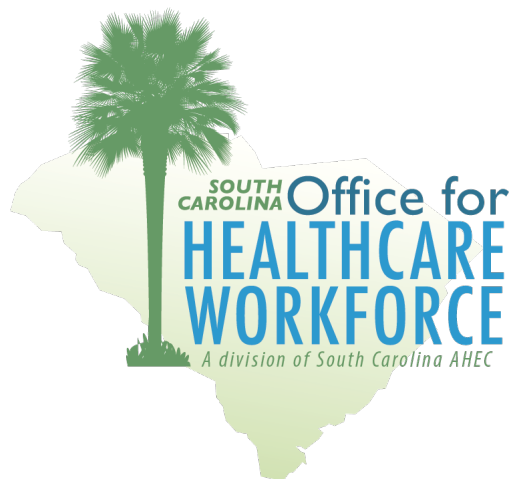


Continuing Professional Development

- **10,063** professionals participated in AHEC CPD programs
- **87,291** contact hours of continuing education accrued by participants
- **18,586** registrations for AHEC CPD programs in South Carolina and beyond

Continuing Professional Development (CPD) Program Registrations by Zip Code, FY25





- **67** data requests fulfilled
- **10** reports and interactive data visualizations produced
- **8** state and national presentations

Visualization Details

South Carolina Residency Match Results (2016–2025) and First-Year Residency Positions (2010–2025)

This interactive dashboard displays where and to which specialties South Carolina medical school graduates from 2016–2025 matched for their graduate medical education (GME, or residency). It also shows the number of first-year (PGY-1) residency positions in South Carolina available and filled during the Main Match from 2010–2025.

South Carolina Residency Match Results and First-Year Residency Positions

Summary

Matches by Location

Matches by Specialty

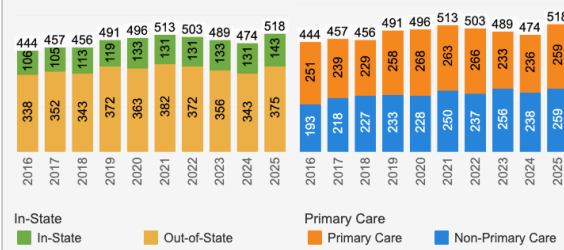
First Year Residency Positions

This summary shows residency match results for South Carolina medical school graduates from 2016–2025 (on the left), and the number of first-year (PGY-1) residency positions by fill type (in-state, out-of-state, unfilled) in South Carolina from 2010–2023 (on the right). Please see the explanatory text below the table for more information, data sources, and limitations.

South Carolina Medical Student Match Results, 2016–2025

In-State vs. Out-of-State Matches

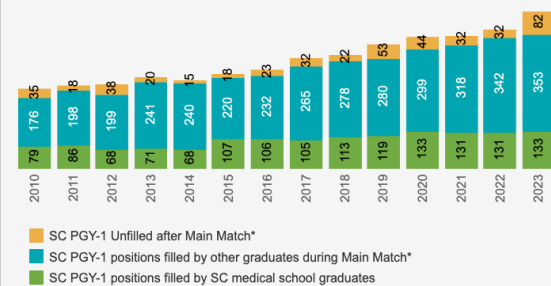
Primary Care vs. Non-Primary Care Matches



In-State
■ In-State
■ Out-of-State

Primary Care
■ Primary Care
■ Non-Primary Care

Available First Year (PGY-1) Residency Positions, South Carolina, 2010–2023



*Data do not include SOAP matches.

Year	Program	Total Matches	# In-State Matches	% In-State Matches	# Out-of-State Matches	% Out-of-State Matches	# Primary Care Matches	% Primary Care Matches	# Non-Primary Care Matches	% Non-Primary Care Matches
2016	MUSC	162	45	27.8%	117	72.2%	74	45.7%	88	54.3%
	USC SOM Columbia	83	27	32.5%	56	67.5%	40	48.2%	43	51.8%
	USC SOM Greenville	49	21	42.9%	28	57.1%	30	61.2%	19	38.8%
	VCOM-CC	150	13	8.7%	137	91.3%	107	71.3%	43	28.7%
	Total	444	106	23.9%	338	76.1%	251	56.5%	193	43.5%
2017	MUSC	164	45	27.4%	119	72.6%	64	39.0%	100	61.0%
	USC SOM Columbia	84	24	28.6%	60	71.4%	40	47.6%	44	52.4%

View on Tableau Public

Navigation icons: back, forward, search, etc.

Questions?

South Carolina Area Health Education Consortium (AHEC) connects students and professionals with the tools, training and resources necessary to develop an effective healthcare workforce, with a focus on primary care for rural and underserved areas.

www.scahec.net